

TDSS

Turbine Flowmeter



LIQUID



GAS



OVERVIEW

Operation

The Model TDSS is standard with a magnetic pick-up which produces a frequency output that is proportional to its volumetric flow rate. When paired with the LCD Flow Monitor, this compact system offers local indication of both flow rate and total flow. For further flexibility, Bass Instruments offers electronic options which convert the frequency output to an analog signal for easy electronic integration with most instruments, PLC's, and computers.

Features

- Easy installation
- High sensitivity
- Resistant to chemical fluids
- Durable and light weight design
- High accuracy
- Exclusive interior design
- Adjustable pulse output

Application

- Mechanical engineering
- Pharmaceutical industry
- Chemical processes
- Water.waste water treatment equipment
- Filtration systems



OPERATING DATA

Working Pressure	100 bar max.
Temperature Limit	-40°C...120°C (ops. 150°C)
Accuracy	±1 % of full scale
Repeatability	0.1 % of full scale
Enclosure	IP65 IP67 or IP68 on request

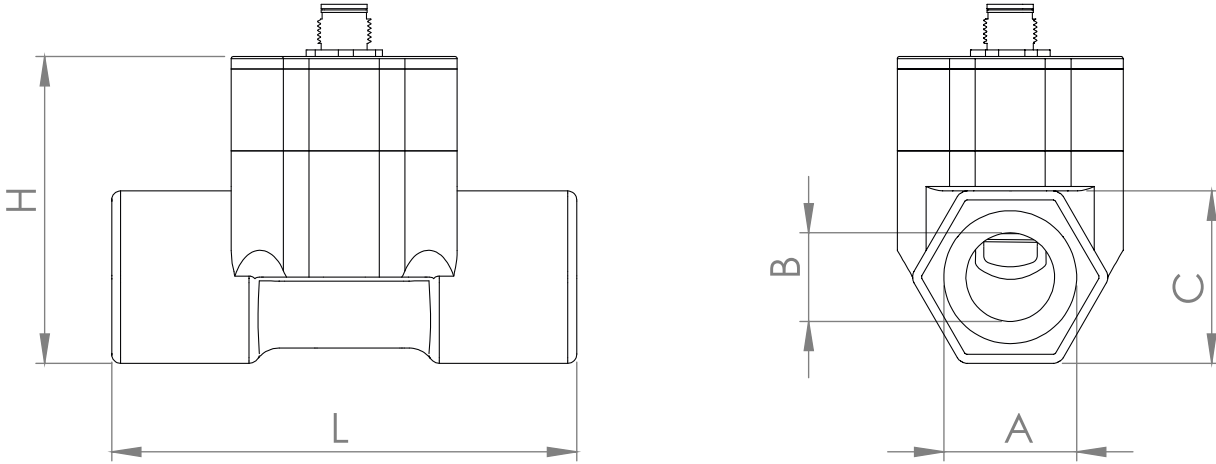
MEASURING RANGES

Pipe Size Range	1/2" ... 2" for th read 1" ... 8" (DN25-DN200) for flanged
Flow Rate Range	0,6 ... 335 l/min for thread 4 ... 800 m ³ /h for flanged

MATERIALS

Body	AISI 316, aluminum
O-rings	FPM
Rotor	PTFE
Shaft	AISI 316

TECHNICAL DRAWINGS AND DIMENSIONS



Size	A	B	C	H	L
DN15	G 1/2"	10	28	61	89
DN20	G 3/4"	14	32	62	89
DN25	G 1"	20	39	69	105
DN32	G 1 1/4"	25	48	75	129
DN40	G 1 1/2"	32	55	83	129
DN50	G 2"	40	66	92	150

*Unit is mm

TDSS DATASHEET V.3 R.1



Bass Ölçme Enstrümanları Ltd. Şti.
Eseşehir Mah. Füsün Sok. No:59 Ümraniye/İSTANBUL TR-34776
+90 216 660 01 63-64
bass.com.tr



■ FLOW RANGES

THREAD	
Size	Range (l/min)
TDSS.015	3...37
TDSS.020	5...85
TDSS.025	10...150
TDSS.032	15...235
TDSS.040	25...387
TDSS.050	40...600

FLANGED	
Size	Range (m ³ /h)
DN25	0,1...10
DN32	1,5...15
DN40	2...20
DN50	4...40
DN65	7...70
DN80	10...100
DN100	20...200
DN125	25...250
DN150	30...300
DN200	80...800

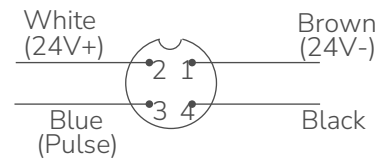
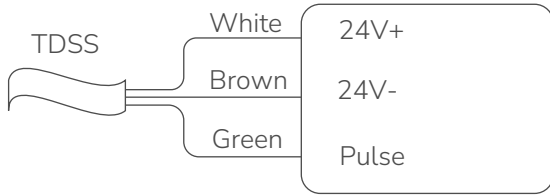
■ ELECTRICAL DATA

Signal Output Pulse (push-pull)
4...20 mA or 0...10 V DC on request

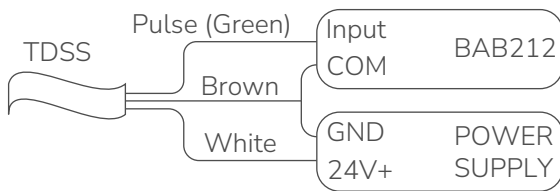
Power Supply 24±10% V DC, regulated

Electrical Connection 1 m cable
M12 connector or DIN43650A socket on request

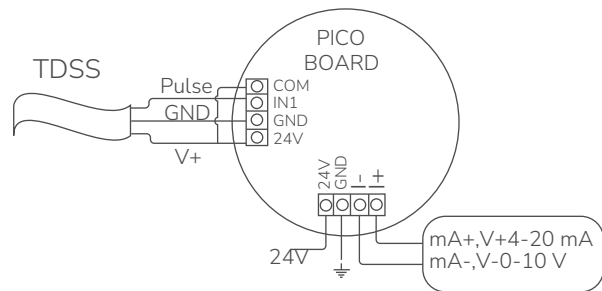
■ WIRING



With M12 Connector



With BAB212



Sensor And PICO Board Connection



■ OPTIONS, ELECTRONIC

Selectable Inputs	4-20 mA,0-10VDC,0-5VDC,Pulse (PNP,NPN)
Operating Media	Liquids
Selectable Outputs	4-20 mA , 0-10VDC and Pulse
Communication	RS485-MODBUS (HART on request)
Analog Input Resolution	10 bit
Digital Input Speed	10 KHz, max
Digital Output Speed	50 Hz max
Display	TFT, 4.3" 480x272 pixel resistive touchscreen
Humidity	%10...85 non-condensate
Power Supply	24 VDC, \pm %10
Power Consumption	3 W
Dimensions	144 x 144 mm (front) ,134 x 134 mm (rear), depth 100 mm
Enclosure	IP65 (front) , IP66 , IP67 on request



■ ORDERING

TDSS						Turbine Flowmeter
Bore Size	XXX					Please look at the flow range table for code
Connection		T				Thread
		F				Flanged (please specify in order)
Body			01			Aluminum
			04			AISI 304
			06			AISI 316
Output			01			Pulse
			02			4...20 mA
			03			0-10 V DC
Enclosure			01			IP65
			02			IP67
Display				N		None
				C		Compact
				Y		BAB212(remote)
Hazardous Area					N	None
					Xd	Exd IIB T4 Gb

